

उसका वह
other's other

curated by Shreyas Karle



January 27 – March 27, 2016



उसका वह

amitesh shrivastava
bhuvanesh gowda
hemali bhuta mahesh baliga
ritesh meshram shreyas karte

acona foundation initiative

The void in an individual's process becomes a pathway to understand it, where each one of us deals with a grammatical framework that borrows from those missing elements thus completing an image.

Amitesh in conversation with Ritesh, Mahesh, Hemali, Bhuvanesh & Shreyas
Ritesh in conversation with Amitesh Mahesh, Hemali, Bhuvanesh & Shreyas
Hemali in conversation with Amitesh Mahesh, Ritesh, Bhuvanesh & Shreyas
Bhuvanesh in conversation with Amitesh Mahesh, Hemali, Ritesh & Shreyas
Mahesh in conversation with Amitesh Ritesh, Hemali, Bhuvanesh & Shreyas
Shreyas in first-half conversation with Amitesh Mahesh, Hemali, Bhuvanesh & Ritesh
Shreyas in second-half conversation with Amitesh Mahesh, Hemali, Bhuvanesh & Ritesh

Does one need to record everything he/she says, if not, how will one remember his/her own words?
Perhaps it is easier to remember what others are saying, because it is always said in an assertive manner.
The human ears have a tendency to listen to outer frequencies rather than inner sensory thoughts.

This exhibit is a smaller experiment to understand the alterations in patterns and the space-time that influences the horizontality & verticality of the thoughts. It goes a step further by looking at this process in a collective manner. How would the process radically shift or become static if multiple models overlay it.

The shift of the heterogeneous thinking mindsets and their independent homogeny would give us a certain insight into the theory of universality, though in the given contemporary landscape we largely deal with a relative theory establishing it as the absolute truth.

Shreyas Karle

About the Curator-

Born 1981 in Mumbai (India) Shreyas Karle is a visual practitioner based in Bombay.

Moving further from his last collaboratively curated show- Bartered Collection (Mumbai), this exhibit marks his first independent curated project. Shreyas Karle, along with Hemali Bhuta, established the Cona Foundation in the suburbs of Bombay in 2012, and is a leading figure today among Indian artists of his generation. In recent years he has taken part in exhibitions including the 2nd New Museum Triennial 2015 (New York) and the Kochi-Muziris Biennale 2012 (India). He is invited to work on a new commission at the Aichi Triennial (2016) in Japan.

About the Foundation-

CONA Foundation is an artist-run space initiated in 2012 by Hemali Bhuta and Shreyas Karle. It emerged from a shared studio in Borivali, where a group of artists and designers felt the need to lay a ground for discourse around each other's practices in an adda or salon-like situation. CONA, as the name suggests, is situated at the corner or edge of the city, where it operates as a parallel pedagogical and residency structure that aims to dissolve the hierarchies between art and design, and acts as a bridge between the vernacular and the sophisticated.



Amitesh Shrivastava

Dr Kureshi, 2015

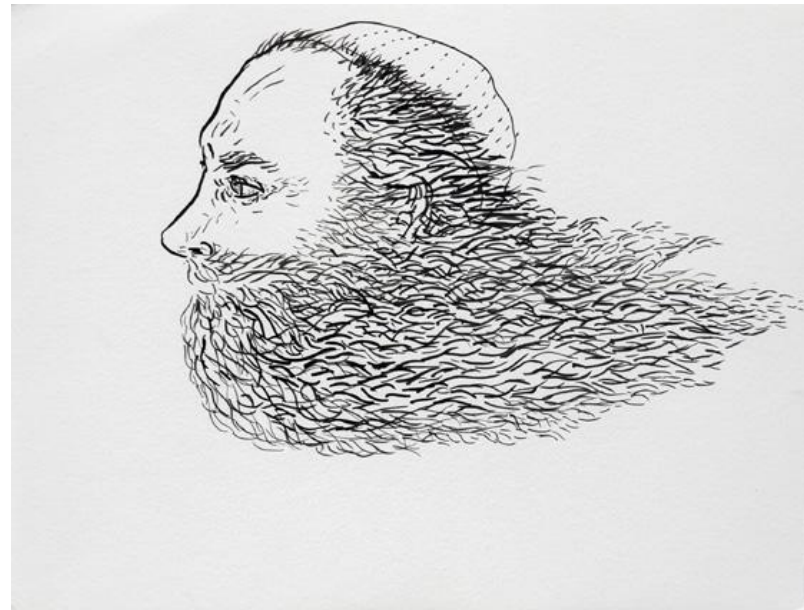
72 x 60 inches

Acrylic on canvas

Rs. 4,50,000/-



Amitesh Shrivastava
 Dr Kureshi , 2015
 10.6 x 13.8 inches each
 Ink on Fabriano paper
 Set of Twelve Drawings
 Rs. 25,000/- each



Amitesh Shrivastava
 Dr Kureshi , 2015
 10.6 x 13.8 inches each
 Ink on Fabriano paper
 Set of Twelve Drawings
 Rs. 25,000/- each



Amitesh Shrivastava

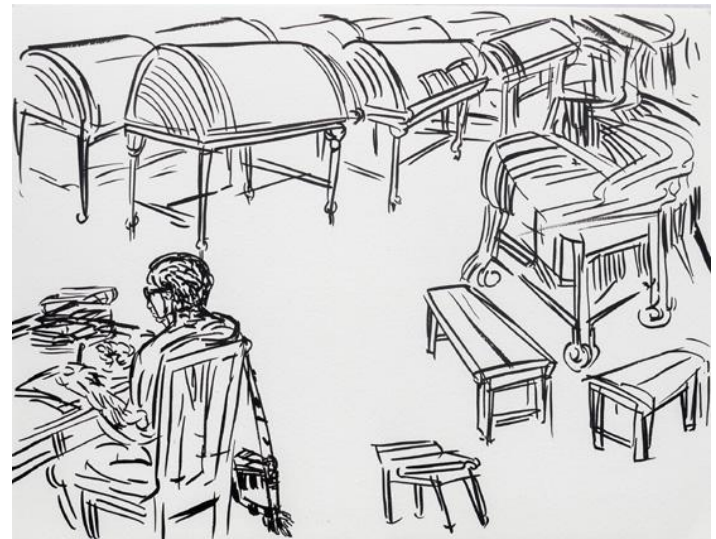
Librarian, 2015

10.6 x 13.8 inch each

Ink on Fabriano paper

Set of Five Drawings

Rs. 25,000/- each



Amitesh Shrivastava

Librarian, 2015

10.6 x 13.8 inch each

Ink on Fabriano paper

Set of Five Drawings

Rs. 25,000/- each



Amitesh Shrivastava

Listener, 2015

Graphite on paper

10 3/4 x 8 1/12 inches

Rs. 20,000/-



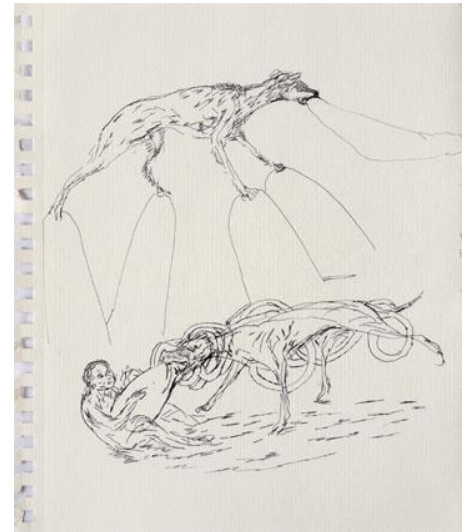
Amitesh Shrivastava

Muddy Walk

Pen on paper

8 1/4 x 5 16/13 inches

Rs. 15,000/-



Amitesh Shrivastava

Snatcher, 2016

Ink on paper

10 3/4 x 8 1/2 inches

Rs. 20,000/-



Amitesh Shrivastava
Graphite on paper, 2015
8 1/12 x 10 3/4x inches
Rs. 20,000/-



Amitesh Shrivastava
Pen on paper
8 1/4 x 5 16/13 inches
Rs. 15,000/-



Bhuvanesh Gowda
Hiranyagarbha, 2015
9 x 5 x 4 inches (HWD)
Medium: salvaged wood
Rs. 70,000/-



Bhuvanesh Gowda
Maquet for A New Universe, 2016
26 x 8 x 12 inches (LWH)
salvaged wood
Weight: 20 Kgs.(approx.), Edition: single
Rs. 1,25,000/-



Bhuvanesh Gowda
'Vimana I', 2016
18 x 16 x 17 inches (LWH)
salvaged wood
Weight: 40 Kgs.(approx.), Edition: single
Rs. 2,00,000/-



Bhuvanesh Gowda
Parallel Chapels, 2015
49 x 25 x 2 inches (HWD)
emulsion paint on salvaged wood
Weight: 25 Kgs.(approx.), Editionz: single
Rs. 3,00,000/-



Hemali Bhuta

Fusion Series TR 95.17/120, 2015

Asphalt, Soap, Wax, Mica and others

1 x 1 feet (each), 1 inch - thickness. (120 pieces)

Rs. 8,00,000/-



Mahesh Baliga
Gaze Chart
Casein on paper
30 x 20 inch
Rs. 1,20,000/-



Mahesh Baliga
Gaze Chart 1
Casein on paper
30 x 20 inch
Rs. 1,20,000/-

Mahesh Baliga
Gaze Chart 2
Casein on paper
30 x 20 inch
Rs. 1,20,000/-



Mahesh Baliga
Gaze Chart 3
Casein on paper
30 x 20 inch
Rs. 1,20,000/-





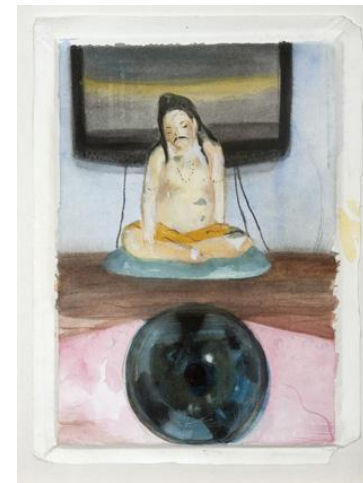
Mahesh Baliga

Women Reading book, 2015
Water color on paper
11.5 x 9 inch , Set of Five
Rs. 1,75,000/-



Mahesh Baliga

Pizza, 2015
Water color on paper
11.5 x 9 inch, Set of Five
Rs. 1,75,000/-



Mahesh Baliga

HD TV, 2015
Water color on paper
11.5 x 9 inch, Set of Five
Rs. 1,75,000/-



Mahesh Baliga

Toy, 2015
Water color on paper
11.5 X 9 inch, Set of Five
Rs. 1,75,000/-



Mahesh Baliga

Artist in News, 2015
Water color on paper
11.5 x 9 inch , Set of Five
Rs. 1,75,000/-



Mahesh Baliga
Denmark Jersey, 2015
Water color on paper
10 x 12 inch
Rs. 35,000/-



Mahesh Baliga
Room no. 10(b), 2015
Water color on paper
9 x 11.5 inch
Rs. 45,000/-



Mahesh Baliga
 Joy Ride, 2014
 Water color on paper
 11 x 10 inch
 Rs. 35,000/-



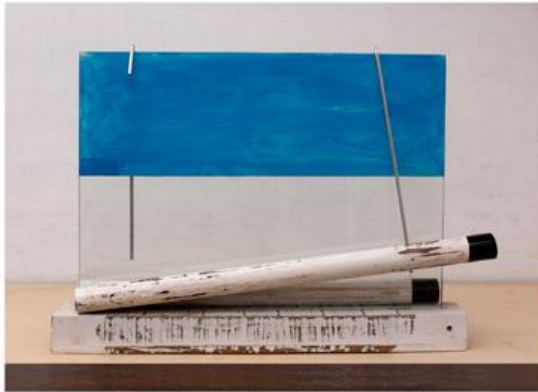
Mahesh Baliga
 Drawing for sculpture, 2013
 Water color on paper
 10 x 14 inch
 Rs. 40,000/-



Mahesh Baliga
 Scare, 2014
 Water color on paper
 10 x 11 inch
 Rs. 35,000/-



Mahesh Baliga
Boy Counting, 2015
Terracotta
9 x 8 x 16 inch
Rs. 1,50,000/-



Ritesh Meshram

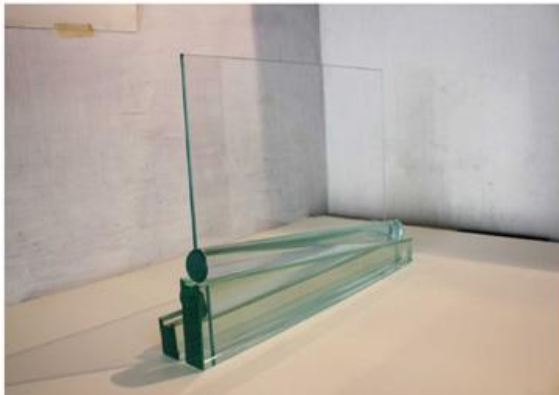
Redevelopment, 2015

glass, aluminium, enamel paint and wood

17 x 4 x 13 inch

Weight – 6 kg approx

Rs. 50,000/-



Ritesh Meshram

Redevelopment, 2015

glass

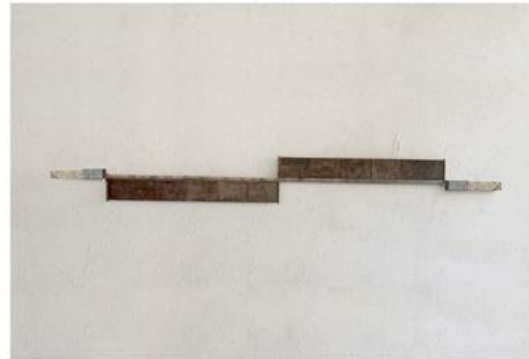
22 x 5 x 15 inch

Weight – 8 kg approx

Rs. 50,000/-



Ritesh Meshram
 Untitled, 2015
 mild steel
 48 x 1 x 1 inch
 Weight – 4 kg
 Rs. 75,000/-



Ritesh Meshram
 Untitled, 2015
 mild steel
 66" x 1.5" x 6"
 Weight – 10kg
 Rs. 1,25,000/-



Shreyas Karle

Four corners of a circle, 2015
 4 x 4 x 30 inches (wxbxh), weight- 17.5 kgs
 Solid aluminum rod and aluminum square
 pipe, Edition- 1+3
 Rs. 2,00,000/-



Shreyas Karle

Right angles of an isosceles triangle, 2015
 8.6 x 8.6 x 24 inches (wxbxh)
 six blocks of teak wood (1 x 1)" each
 Edition- 1+3
 Rs. 1,50,000/-



Shreyas Karle

5 mm, 2015

pipe one-85 cms., pipe two- 90cms.

brass pipes

Edition- 1+3

Rs. 1,50,000/-



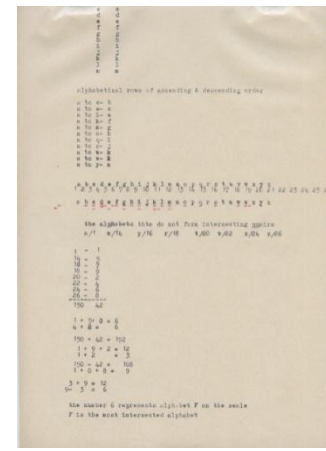
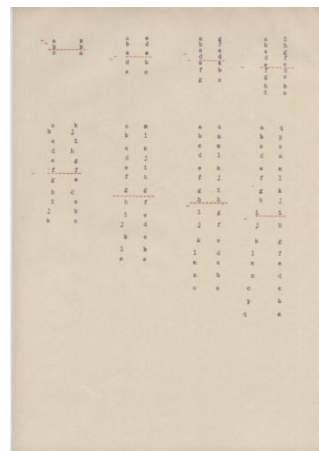
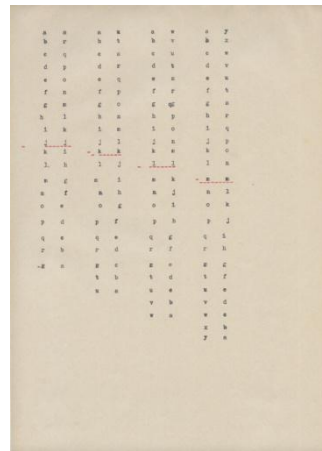
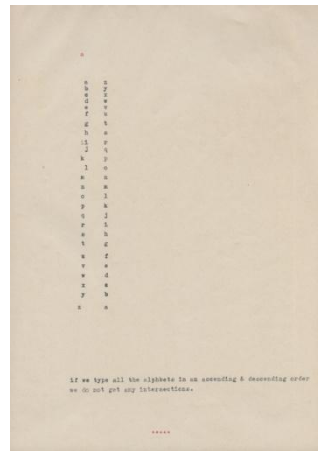
Shreyas Karle

Found postcard, 2015

24 x 19 inches

Collage on paper

Rs. 90,000/-



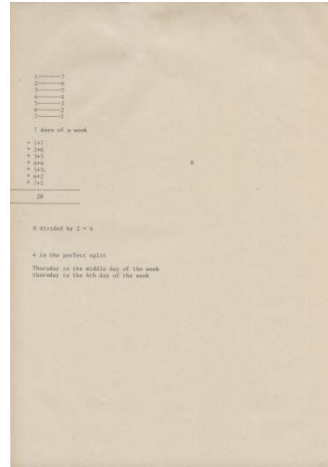
Shreyas Karle

F is the most intersected alphabet (series of 4 drawings), 2015

14 x 8.6 inches

typo on paper

Rs. 1,50,000/- for set of four



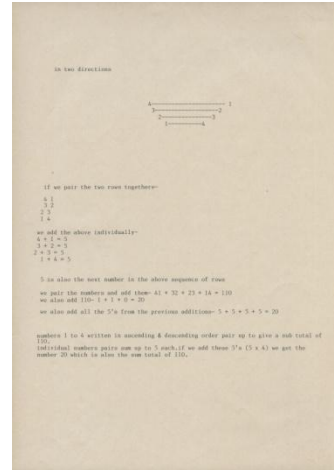
Shreyas Karle

6 is the perfect split of 12 (12 months),
2015

14 x 8.6 inches

typo on paper

Rs. 1,50,000/- for set of four



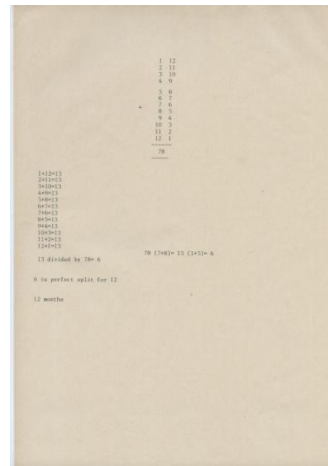
Shreyas Karle

In two directions, 2015

14 x 8.6 inches

typo on paper

Set of four



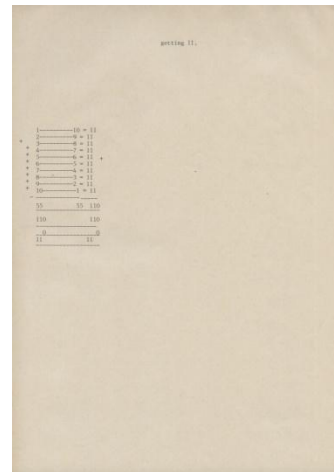
Shreyas Karle

Thursday is the middle day of the week,
2015

14 x 8.6 inches

typo on paper

set of four



Shreyas Karle

Finding 11, 2015

14 x 8.6 inches

typo on paper,

Set of four

Art District XIII is India's new dynamic art space located in Lado Sarai, New Delhi. Spread across 2300 square feet of eclectic gallery space. The emergence of **Art District XIII** resonates from Indian art demanding transparency in dealing, both with the artist and the collector, with a platform for the collector and the artist to meet, learn and grow together.

Art District XIII celebrates the espousal of the numeric **XIII**, considered inauspicious by some but very auspicious by the initiators of the gallery, also opening in the summer rather than an opening in the traditional winter months, thereby challenging the paradigm.

With an aim to support exceptional artists who show the potential to have a global career and art which can be embraced by both established and upcoming collectors, the gallery will strive to ensure that collectors get value. **Art District XIII** strongly holds back from showing artists who are transactional in their approach, similarly also ensuring that artists are guided and shown on International platforms.

Fundamentally **Art District XIII** has been conceptualised to encourage people to embrace art in a gallery space which is diverse and will show art beyond the ordinary. **Art District XIII** believes that profit is not the motive but art is - both the artist and the collector will stand to gain from a gallery that promises to transform the Indian art landscape.

Kapil Chopra, Mentor Art District XIII and President The Oberoi Group: “**Art District XIII**’s presence in the world of art aims at showing art beyond the ordinary. Where art is universal in its outlook and yet not out of bounds for an influential collector. It is an initiative that would put Indian art on the global map. Conceptualised by art collectors and mentored by leading artists and curators, **Art District XIII** invites you to an International experience in the heart of New Delhi.

Art District XIII

F- 2 13C, Ground Floor. Lado Sarai.

New Delhi-110017

rajeev@artdistrict13.com

M. 9560505946

Open Monday to Saturday

10am to 6pm

